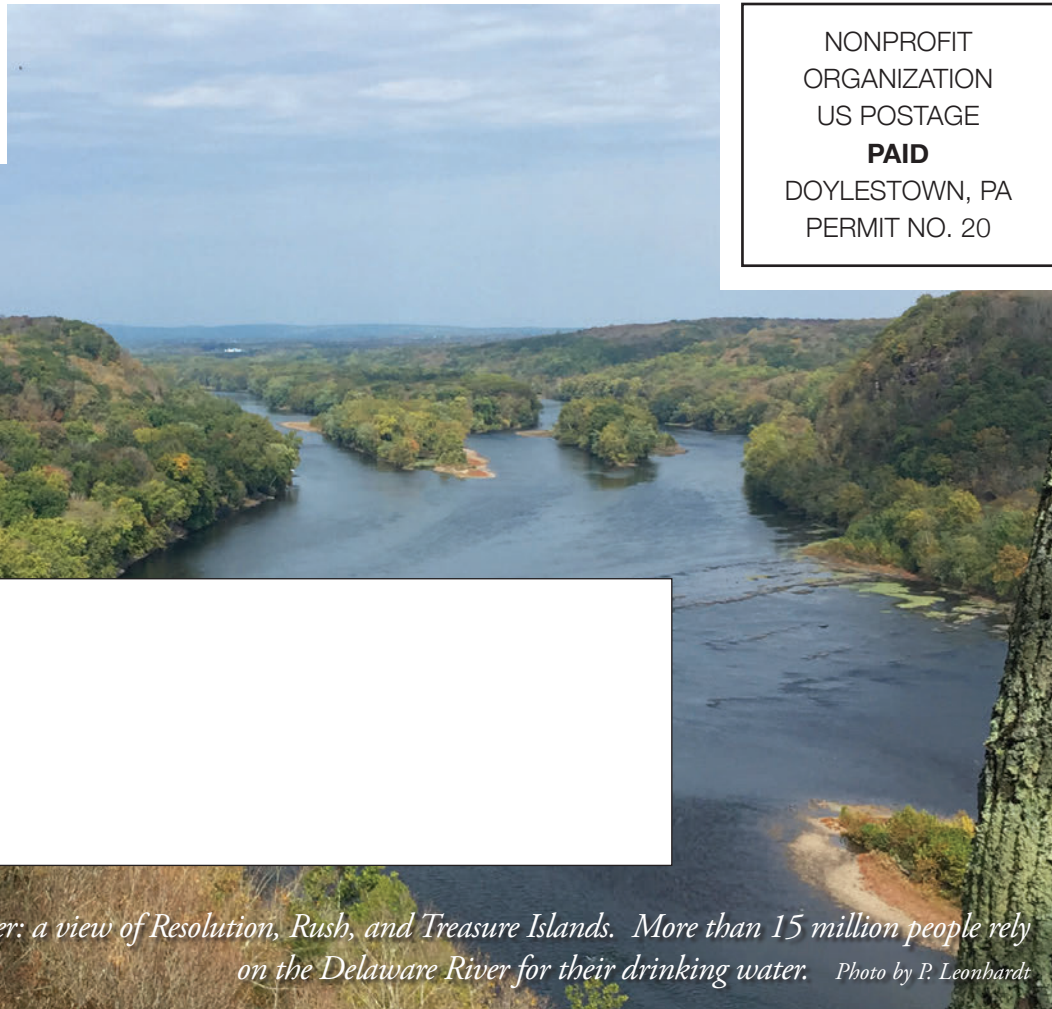




P.O. Box 206  
Erwinna, PA 18920



NONPROFIT  
ORGANIZATION  
US POSTAGE  
**PAID**  
DOYLESTOWN, PA  
PERMIT NO. 20

Looking north on the Delaware River: a view of Resolution, Rush, and Treasure Islands. More than 15 million people rely on the Delaware River for their drinking water. Photo by P. Leonhardt

## REAL ESTATE GIFTS: A SOLID LEGACY FOR PROTECTING OUR COMMUNITY

You can help create an enduring legacy for you and your family by donating your property to the Tincum Conservancy - even if your land doesn't have conservation values.

Consider deeding your property (such as a home, vacation home, commercial building or investment property) to the Tincum Conservancy now or through a bequest in your will or trust.

By donating all or part of your property to the Tincum Conservancy, and you may be able to:

- reduce your capital gains tax;
- receive an income tax deduction;
- avoid the hassle of maintaining or selling a property; and
- help with your estate plans.

Best of all, your gift will provide significant support for our vital work to protect the community we all love.

Please contact our executive director, Jim Engel, at 610-294-1077 or email [jengel@tincumconservancy.org](mailto:jengel@tincumconservancy.org) for questions and a confidential discussion about your options and opportunities.

### You can make a difference!

**Get involved — volunteer!** Tincum Conservancy would not exist without its volunteers. We need help with mailings, research, event planning, and more! If you prefer the outdoors we need folks to take part in our River Road cleanups.

Visit [tincumconservancy.org/volunteer](http://tincumconservancy.org/volunteer) for more information.

### Double Your Impact with an Employer Matching Gift.

Maximize your Conservancy support with an employer matching gift. Many companies make it easy to double or triple the amount you donate! Check with your human resources department.

### Leave a Legacy, Plan a Gift.

When you include the Conservancy in your estate plans, you help secure the future of our region's natural resources and rural character for future generations. Planning today extends your impact beyond your lifetime.

**Conserve Your Property.** Preserving your land is a lasting way to contribute to our community.

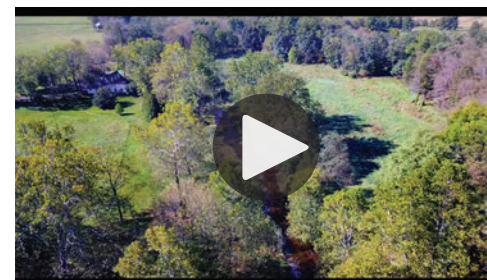
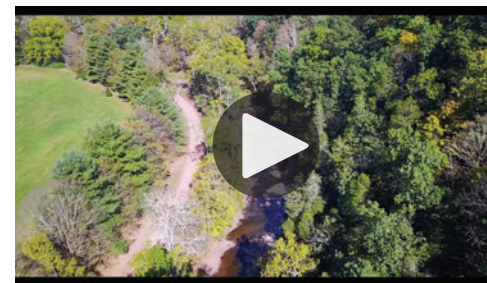


FALL/WINTER 2017



# COMMON GROUND

PROTECTING OUR RURAL CHARACTER AND NATURAL RESOURCES THROUGH COMMUNITY-BASED LAND CONSERVATION.



Stills from video by B. Wallace

## HAWK'S EYE VIEW: A DIFFERENT PERSPECTIVE

During the past decade, the Tincum Conservancy has written at length on the importance of our waterways to families, farms and wildlife through the *Common Ground* newsletter. We often take fresh and plentiful water for granted. However, past episodes of illegal dumping, toxic waste and soil erosion have been a lesson that we can't take our natural resources and water supply for granted.

Recently the Conservancy's executive director, Jim Engel decided that he wanted to communicate the importance of the Tincum Creek from a different perspective. Local resident and drone owner, Bruce Wallace, offered his expertise and time to help realize this vision.

Over a two day period, Mr. Wallace flew his drone at 150 feet above the ground

and filmed the creek from where it meets the Delaware River all the way to its headwaters in Nockamixon and Bridgeton Townships.

"Being able to view the video as the drone flew above Tincum Creek gave me the exhilarating sensation that I was experiencing what a hawk or eagle sees when it soars over our area," explains Engel.

The dramatic footage is now being edited by another Conservancy supporter, John Clement, into a three minute video that will be made available via the Conservancy's website, Facebook page and other electronic media.

Look for an announcement via email and social media in late November for the debut of the video and experience the beauty of this local natural treasure.

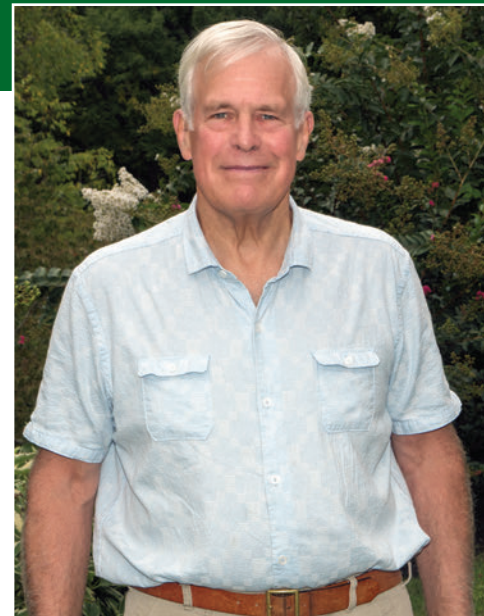


## PRESIDENT'S MESSAGE...

As most of you know, the Conservancy has just celebrated its 25<sup>th</sup> Anniversary and we have lots of accomplishments to be proud of thanks to you. However, we can't help but wonder where we'll be 25 years from now. Certainly we have lots more basic land preservation to do before we can claim that we have really protected the water resources with which we are blessed and that we have prevented inappropriate housing development, subdivision of farms and destruction of wildlife habitat in our communities. In Tincum alone, we estimate that we have another 4,000 acres to go and in Nockamixon and Bridgeton, there are an additional 2,000 more acres to be protected.

As we look on down the road, where will the money for land protection come from? Our township's open space funding is running low and we don't sense much enthusiasm for additional open space funding from our local politicians. And finally, can we look to the state for open space funding? As of this writing, the budget battle in Harrisburg continues and any open space money is questionable.

So where does this leave us if we are to continue with our mission? One less well known fact about land protection for the Conservancy is that a significant number of the 113 conservation easements have been fully donated! This means that the landowners have received a federal income tax deduction and not received payment for their easements. Because of recent changes in tax law, almost every landowner can now lower



the amount of taxes they owe for up to 15 years. Hopefully additional generous landowners will continue to conserve their land in the years to come.

During the next three to five years, we fully expect that we will have to generate funding for additional conservation easements from our generous members and local foundations. This is in addition to the funds we currently raise for our core programs and mission.

Seeking donations now from donors is a viable but short-term solution to the longer term demand for reliable open space funding. Perhaps the best long-range solution to our funding challenge will be our legacy program. The Conservancy already has about \$1.6 million in legacy pledges from 13 members. What if 100 or so of our members decided to make a bequest in their will for the Conservancy and open space protection? Our membership has been extraordinarily generous in our first 25 years. What a legacy we would leave if we continued that trend.

## 2017 COMMUNITY CELEBRATION

On Saturday, September 16<sup>th</sup> over 100 members and non-members gathered for the annual celebration. Typically for members only, the party was open to the community to help commemorate our 25<sup>th</sup> anniversary.

It was a beautiful, bright and sunny day as attendees enjoyed each other's company, along with delicious snacks, desserts, refreshments and a taste of Owowcow Creamery's heavenly ice cream. The event was held at Darke Hollow Farm, a 109-acre farm conserved in 2006 by neighbor, Philip Rushton. *Thanks to Barry Arkles and Janine Black for hosting and to Maureen Santina for these photos.*



Paul Stillman and Joanne Hahn



Sue Bunkin and Event Coordinator Betsi Campbell



Lari and Raymond O'Donnell



Janine Black, Charles and Sandy Lizza



Kelly Simcox, Pat and Bruce Keyser and Jesse Salamun



John and Colleen Dey



Bill Tomai, John Sebesta and Evelyn Hart



Bill Cahill



Hosts Barry Arkles and Janine Black



Kris Kern and Neal Feigles



SueAnn Rainey, Amanda Bertele and Michael Kaufman



Carl Kwartnik



Linda and Fred Ammerman



Milo Rushton

### BOARD OF TRUSTEES

- Boyce Budd, President
- Neal Feigles, Vice President
- Peggy Enoch, Secretary
- Dorothy Parker, Treasurer
- Karen Budd
- Mark Manchester
- Chuck Scholer
- Sue Smithers

### STAFF

- Jim Engel, Executive Director
- Kelly Germann, Resource Protection Mgr.
- Maria Fell, Office Manager

Tincum Conservancy  
965 River Road  
P.O. Box 206  
Erwinna, PA 18920

610-294-1077  
fax: 610-294-2906  
info@tincumconservancy.org  
www.tincumconservancy.org



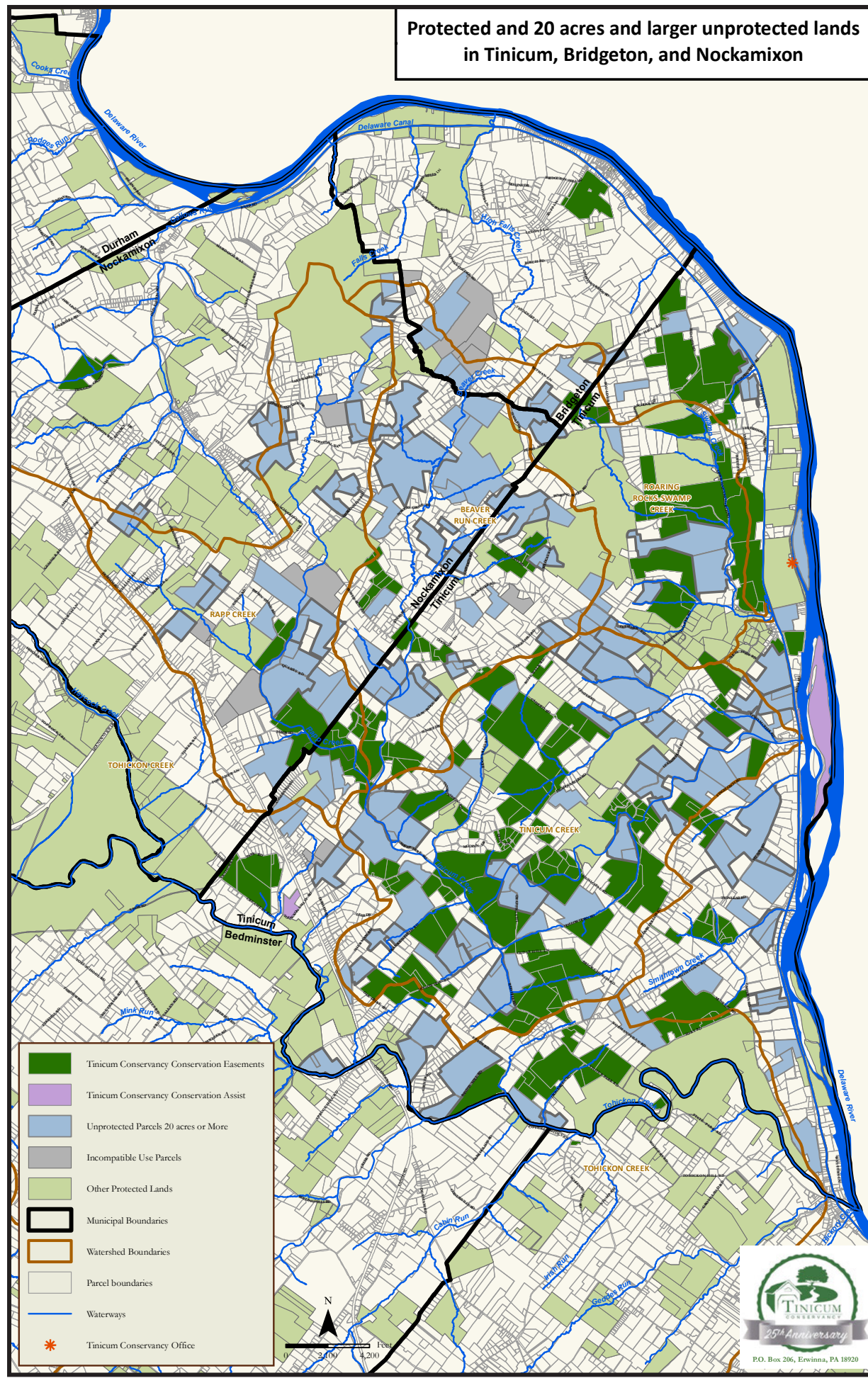
Land trust accreditation is a mark of distinction awarded to land trusts meeting the highest national standards for excellence and conservation performance.

The Tincum Conservancy is a 501(c) (3) non-profit organization established in 1992. Donations are tax deductible as allowed by law.

### STAY CONNECTED WITH NEWS & EVENTS

- Sign up for email news at [tincumconservancy.org](http://tincumconservancy.org)
- Like us on Facebook
- Follow us on Instagram

Protected and 20 acres and larger unprotected lands in Tincum, Bridgeton, and Nockamixon



# DOUBLE YOUR IMPACT

## ~~\$18,000~~ \$25,000 MATCHING GIFT CHALLENGE

By joining now, we can match dollar for dollar your gift to protect the future of our water, forests, farms and quality of life.

Already a member? Give more than last year and your additional gift will also be matched dollar for dollar.

Thanks to the generosity of an anonymous benefactor, we've almost reached our original \$18,000 goal. Now with the added generosity of a second inspired donor we hope to reach \$25,000 to help ensure our next 25 years!

Thanks to more than 60 loyal supporters and a group of first time donors from Tincum, Nockamixon, Bridgeton and beyond, we are making great progress towards our goal of \$25,000. *Campaign gifts received between Aug. 1<sup>st</sup> and Oct. 31<sup>st</sup>:*

- |                                |   |                                  |   |
|--------------------------------|---|----------------------------------|---|
| Anthony & Margaret Adamucci*   | Luc Filiault*                                       | Charles & Sandy Lizza*           | Ben Rotor   |
| Dorthea Adasavage*             | Craig & Natalie Funt                                | Triste Longcore & Kim Gostelow*  | William & Deborah Ruth                            |
| Stefan Aigner                  | Ed & Jeanette Geiger*                               | Norm MacArthur & Bill Novak      | Chuck & Sue Scholer                               |
| Roberto & Rebecca Aguas*       | Ann Glaser*   | Mark & Polly Manchester          | Ian & Erica Shankland*                            |
| Anonymous (3) *                | Geoffrey Haines-Stiles<br>& Erna Akuginow           | John McGlinchey*                 | Virginia & Neal Sigety                            |
| Wendy & Gabriel Battisti       | Tiffany Hamilton                                    | Linda & William McInerney*       | Robert and Catherine Siley                        |
| Andre Becker & Ray Albergotti* | Kevin & Sheri Hartsoe*                              | Wendy McPherson*                 | Gaye Singley & Joe Birch                          |
| Charlene Briggs*               | J.P. & Jane Henry*                                  | Adam Meshkov & Eleanor Breslin*  | Sprocket Foundation (Jill & Stephen<br>McDonnell) |
| Rosella Caloiero*              | Michael Heridia*                                    | Sally Mirick                     | Suzanne Stratton & Louis Pruitt                   |
| Neal & Leslie Carson*          | Geoffrey & Sally Holvey-Slifer*                     | John Muraco & Laura Hugh         | Robert Tumolo                                     |
| Robert & Patricia Cerwin       | Michael Kaufman & Amanda Bertele*                   | Joyce & Brian Murphy             | John & Linda White*                               |
| Christopher Connard*           | Scott Kelly & Kathie Brown*                         | Ray & Lari O'Donnell             | David Upmalis & Patricia Leonhardt                |
| Pat & Diane Croce*             | Cynthia & Tibor Keler                               | Pat & Suzanne Patterson          | Antonio & Kathleen Vega*                          |
| David & Pat Definis*           | Stacey & Brett Kendall*                             | David Przystasz*                 | Vernon & Jean Wehrung                             |
| Susan Dryfoos                  | Kris Kern*  | Sue Ann Rainey & Adelbert Gillen | Dan & Mary Woodruff                               |
| Robert Erbrick*                | Katherine Koos ( <i>in memory of Betsi Jacobs</i> ) | Charles Reichner                 | Tricia Zimic & David Segarnick*                   |
| Neal & Heidi Feigles           | Richard & Stana Lennox                              | Jonathan & Melissa Reiss         |   |
| Maria Fell & Dennis Delaney    |   | Scott & Cathy Reynolds           |   |

\* New Members-Welcome!

**AMENDING THE FUTURE OF CONSERVATION EASEMENTS**

*Dictionary.com defines the word "amend," as: To make changes in (a text) in order to make it fairer, more accurate, or more up-to-date; to modify formally, as a legal document; to make better; improve.*

When the Tincum Conservancy or another land trust accepts a perpetual conservation easement, it promises the easement grantor, land trust members, the federal government, funding sources and the public that the land trust will uphold every single term of the easement in perpetuity. *That means forever.*

The first known conservation easement (or "Purchase of Development Rights") program began in 1974, in Suffolk County, New York. In 43 years of land protection, much has changed in how communities value their natural resources, and how land trusts define and protect those conservation values.

Once in a great while, a land trust or a landowner may request to amend certain terms in an easement. Amendments can allow land trusts to carry out the promises they've made in a changing world. But amendments are extremely rare, and perhaps the most controversial subject in the field of land conservation today.

Amendments are complicated. A poorly considered amendment can erode the public's confidence that a land trust will enforce their agreements into perpetuity. Amendments can raise income tax issues for the landowner with the IRS. Improperly done, an amendment could cause the land trust to lose its non-profit, tax-exempt status. More specifically, no amendment can confer economic or

financial gain to a landowner, such as enhanced property value or return of charitable deductions the landowner may have claimed. Most essentially, an amendment may not reduce or harm the conservation values protected by the conservation easement. And, of course, nothing is free: there are attorney, appraisal and surveyor fees and costs for Conservancy staff-time.

Generally, there are only two circumstances under which an amendment might be considered:

1. To correct an error or oversight in the language of the original easement, such as an inaccurate legal description, or to clarify ambiguous terms with current standard language, or,
2. To achieve additional or enhanced conservation values that are consistent with the original conservation purpose of the easement. An amendment may, for example, increase the amount of land protected, reduce the size of or remove a building area, result in fewer allowed structures, or increase safeguards for protected resources.

Tincum Conservancy has considered and welcomes, on a case-by-case basis, amendments that achieve a clear conservation gain. During the next 25 years, we will continue seeking new opportunities to protect our valuable land, water and natural resources. We will also encourage and be receptive to achieving enhanced and superior protections for the easements to which we pledged our promises long ago.

— Kelly Germann



**Tincum Creek**  
*Through protective land use ordinances and state-accepted water quality standards Tincum Creek was designated an Exceptional Value (EV) waterway in 1996.*

*Thanks to thousands of acres of conservation easements, diligent local citizens and community leaders, Tincum Creek's water quality remains one of the highest in the state of Pennsylvania.*

Photo by P. Leonhardt

**DONATIONS THAT ARE MORE POWERFUL THAN CASH**

Nearing the end of every year, the Tincum Conservancy receives a small hand full of powerful gifts from donors that come in the way of appreciated stock, mutual funds or a donation directly from an IRA retirement account. These types of gifts offer the donor a smart way to make a real difference by helping us accomplish our mission while costing the donor less compared to making a traditional cash donation.

**Appreciated Assets Donation**

The donation of appreciated assets, usually stock or mutual fund(s), allows the donor to receive a deduction for their gift and because the asset is transferred directly to the Conservancy, the donor can also avoid capital gains tax, an extra incentive for the donor.

Your brokerage firm, where the asset is held, can work directly with the Conservancy to make the transfer easy for you. Please note that the asset you use to make your gift must have been held by you for more than one year to be fully deductible.

Here's a comparison of donating stock rather than selling the stock and sending the Conservancy a check.

Assumptions: Donor in 25% income tax bracket; Capital gains tax rate 15%

	\$5,000 cash	\$5,000 stock cost basis \$2,500	\$10,000 cash	\$10,000 stock cost basis \$2,500
<b>Charitable Deduction</b>	\$5,000	\$5,000	\$10,000	\$10,000
<b>Tax Savings @ 25%</b>	\$1,250	\$1,250	\$2,500	\$2,500
<b>Capital Gains Tax Saved</b>	\$0	\$375	\$0	\$1,125
<b>Net gift cost to you</b>	\$3,750	\$3,375	\$7,500	\$6,375

**Donate directly from your IRA and save on your taxes**

If you are 70½ or older, you can make a tax-free distribution from your traditional or rollover IRA to the Tincum Conservancy. You can donate as little as you want or up to \$100,000 each year without incurring income tax on your withdrawal.

Here's how it works. You request a cash distribution from your traditional or Roth IRA mailed or wired directly to the Tincum Conservancy. This strategy shields you from federal income tax that you normally pay when receiving a distribution from your IRA plus the proceeds qualifies towards your annual IRA Required Minimum Distribution (RMD).

Please contact our executive director, Jim Engel, at 610-294-1077 or email [jengel@tincumconservancy.org](mailto:jengel@tincumconservancy.org) for questions and a confidential discussion about your options and opportunities.

*Please note that The Tincum Conservancy cannot render tax or legal advice and we urge you to consult with your professional advisor about your situation before making a charitable gift.*

*"The quicker we humans learn that saving open space and wildlife is critical to our welfare and quality of life, maybe we'll start thinking of doing something about it."*

— Jim Fowler

Erratum: Reference to Spring/Summer issue spelling Shamlee, of Tincum correction Chamlee

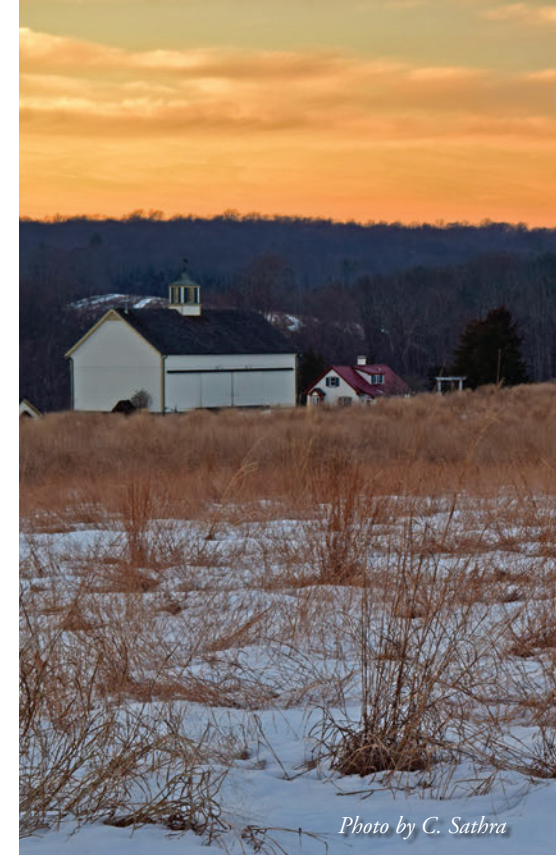


Photo by C. Saibra

*Conserved Lands Photo Exhibit*

**Celebrating 25 years of conservation: A photographic retrospective**

Visit the Conservancy office at 965 River Road in Erwinna, PA and enjoy our new photographic gallery. Twenty-seven photos covering 13 conserved properties gives you a rare view of these beautiful landscapes. Get the chance to learn more about the Conservancy and its mission to protect the natural resources, farms and rural character of the region.

If you'd like to stop by and view the gallery please call the office at 610-294-1077.